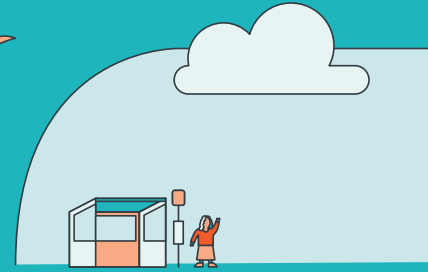


He Tūāpapa ki te Ora Infrastructure for a Better Future



2050 AOTEAROA

Response summary

Our lives rely on infrastructure. We need it to get around, get ready for the future and get ahead as a country.

In March 2021 we asked New Zealanders what they want Aotearoa to look like in 2050. What we've heard will shape the development of a 30-year infrastructure strategy.

The strategy will lay the foundation for the people, places and businesses of Aotearoa to thrive for generations.

The results in this report are from the Aotearoa 2050 survey conducted by the New Zealand Infrastructure Commission, Te Waihanga. The survey was open to New Zealanders for feedback from 22 March 2021 to 2 May 2021. For more information visit www.aotearoa2050.infrastructure.govt.nz

23,638
responses

8,500+
comments made

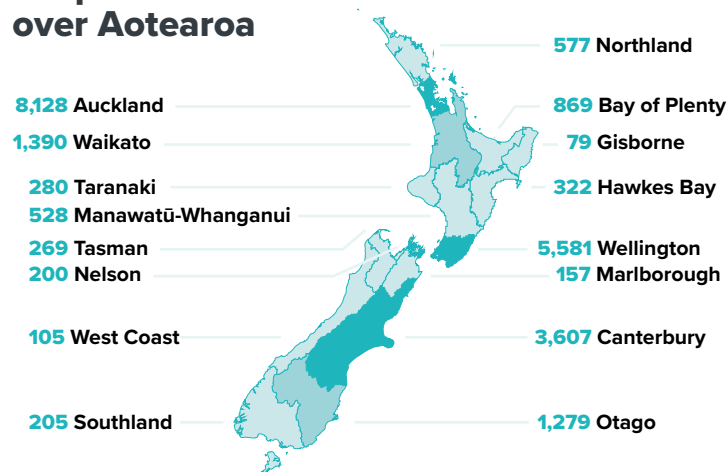
New Zealander's spent over
2,300 hours
engaging.

With an average of
6 minutes
per response.

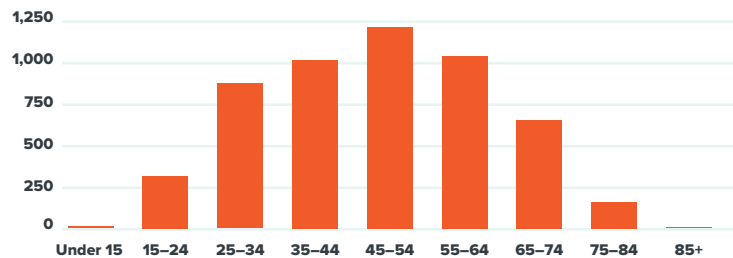
Over a time period of
45 days.

We heard from a wide range of New Zealanders:

Responses from all over Aotearoa

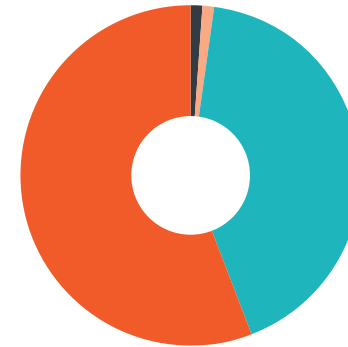


Age



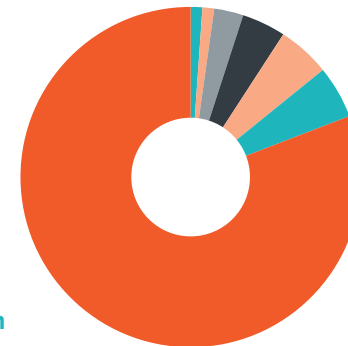
Gender

56% Female
42% Male
1% Another gender
1% Not specified

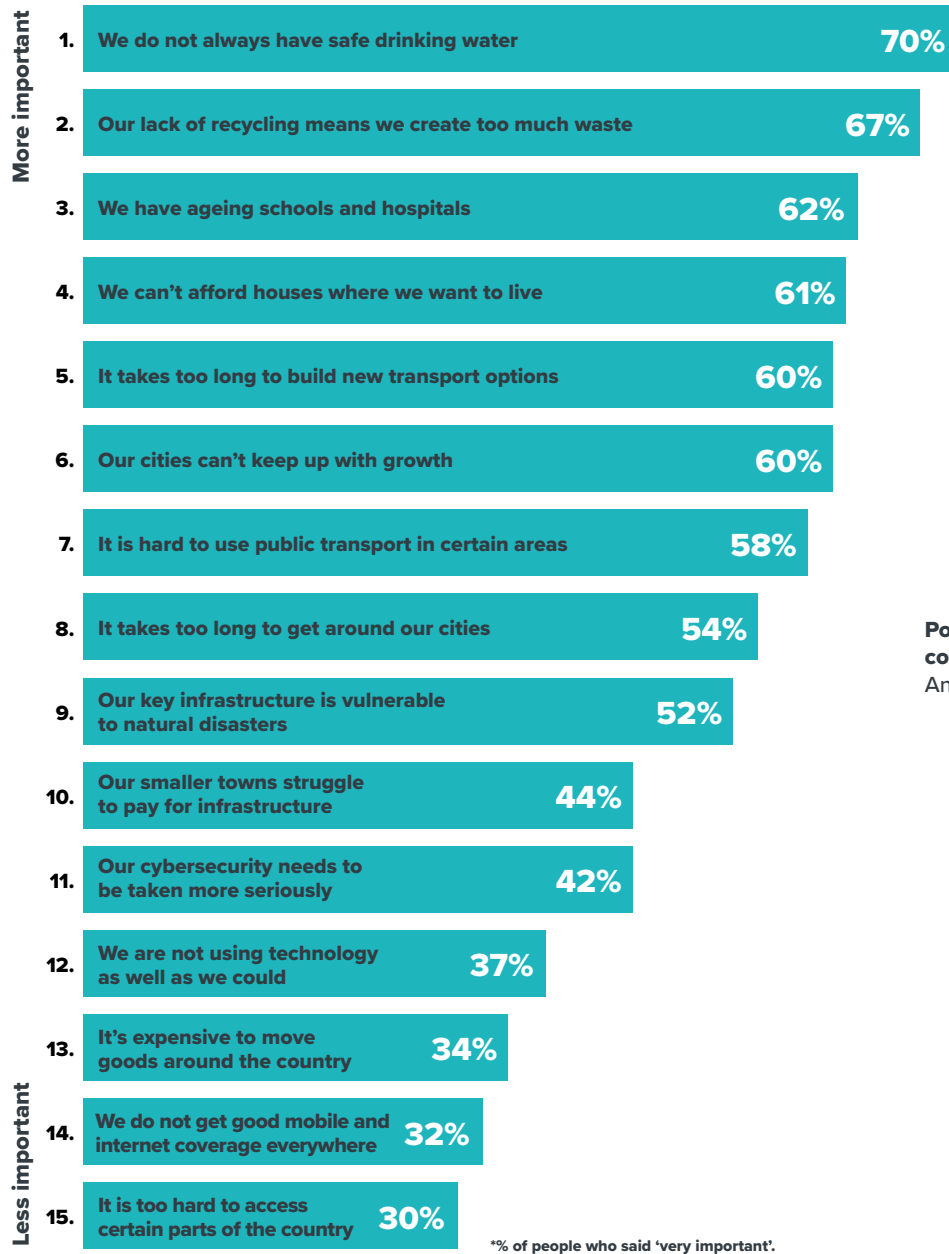


Ethnicity

81% European/Pākehā
5% Māori
5% Other
4% Not specified
3% Asian
1% Pacific peoples
1% Middle Eastern/
Latin American/African



We identified 15 current issues. You told us which were most important:

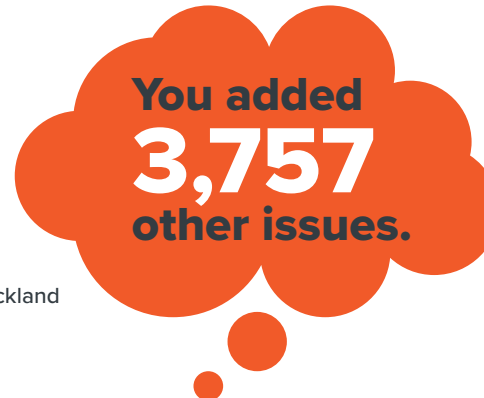


*% of people who said 'very important'.

Unreliable, infrequent public transport.
Anonymous, Bay of Plenty

Rural communities face inequities in terms of infrastructure and access to healthcare and education.
Anonymous, Canterbury

Poor use of rail and coastal shipping...
Anonymous, Canterbury



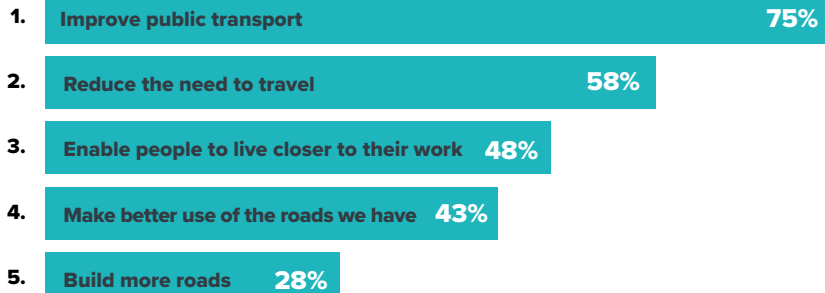
Good planning for major disasters needed.
Anonymous, Waikato

Food security.
Anonymous, Auckland

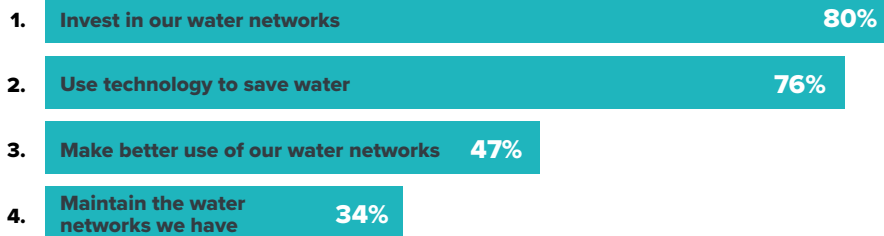
Our roading is terrible in the North, this needs remedying.
Anonymous, Northland

We asked about three future scenarios. You told us which ideas we should consider:

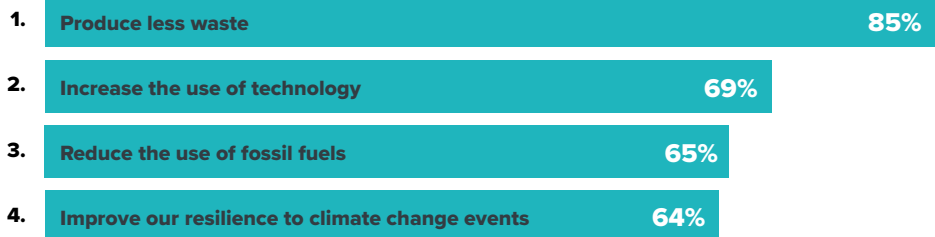
How should we make it easier, faster and more reliable to get around?



How should we ensure we have safe and reliable water in the future?



How should we prepare for the impacts of climate change?



*% of people who said 'definitely'.

Need second Auckland Harbour crossing.
Anonymous, Auckland

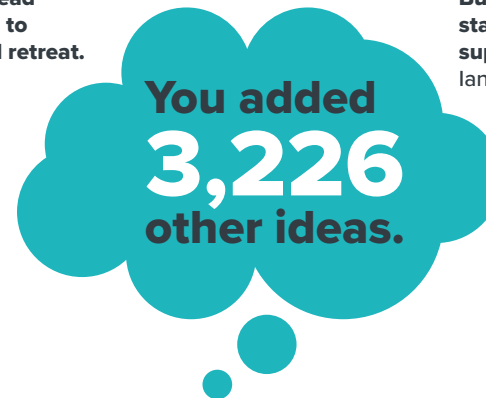
Reduce reliance on imported products.
Anonymous, Otago

Plan 100 years ahead (life time of pipes) to factor in managed retreat.
Jenny, Nelson

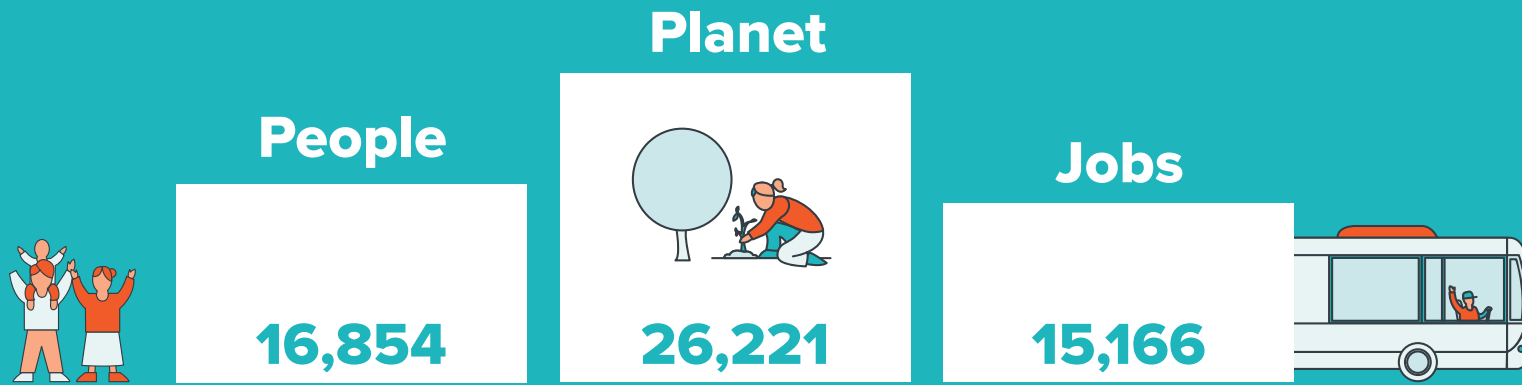
Build more hydro power stations for long term supply continuity.
Ian, Waikato

Look at innovation to turn our waste into resources.
Anonymous, Tasman

Using green spaces to improve pollinator populations.
Anonymous, Auckland



When making decisions about future scenarios,
we asked you what we should prioritise.
You told us your priorities:



Number of times chosen as a 'very high' priority in the three scenarios.

By 2050, you told us that to get around faster and more reliably... We use more public transport and active modes.



3,039 comments made on this scenario and related issues 

Reliable, frequent and cheap public transport to encourage more people to use it.
Anonymous, Auckland

Transport connection. Allow users to use different buses for a certain time.
Anonymous, Otago

1 in 4 comments mentioned improving public transport.

Greater and safer access to cycling and walking. Improve health, lower emissions reduce road congestion.
Kathleen, Canterbury

Make it more pleasant to use active modes by reducing traffic speeds to 30 in all urban and suburban areas.
Anonymous, Wellington

1 in 6 comments mentioned making it better to use active modes.

Fast rail between Auckland and Wellington.
Anonymous, Hawke's Bay

Invest in rail freight networks and get as many trucks off the road as possible.
Grifen, Northland

1 in 4 comments mentioned increasing the use of rail for the movement of people and goods.



Only 28% of respondents said 'definitely' to building more roads.



3 out of 4 respondents said 'definitely' to improving public transport.

By 2050, you told us that to get around faster and more reliably... We travel less frequently and not as far.

We use lower carbon ways to travel.



3,039 comments made on this scenario and related issues 

Requiring companies to allow people to work from home as first option.

Anonymous, Northland


Rather than allowing the big cities to continually sprawl, why not encourage large business to relocate to the regions.

Matt, Taranaki

About 150 comments mentioned flexible working and the changing nature of work.

We are stuck in old ways of working (e.g. 9-to-5 work from a central office location we need to commute to), and we are not adopting more efficient and productive ways of working and spreading out the demand on our infrastructure...

Anonymous, Hawke's Bay

 **58% of respondents said 'definitely' to reducing the need to travel.**

To eliminate fossil fuels we need to make electric vehicles cheaper and easier to fill.

Anonymous, Canterbury

Incentives for energy-saving behaviour. At present there is no incentive to switch to more environmentally-friendly energy sources (such as PV solar), or to use low-carbon transport.

Anonymous, Southland

About 120 comments mentioned the need for low carbon transport.



48% of respondents said 'definitely' to enabling people to live closer to their work.



65% of respondents said 'definitely' to reducing the use of fossil fuels.

By 2050, you told us that to have safe and reliable drinking water... We need to address the number one issue.

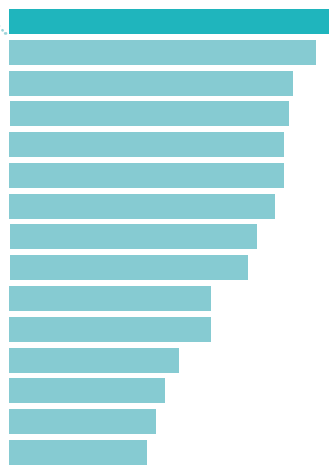
We have a robust water network.



1,950 comments made on this scenario and related issues 

1. **We do not always have safe drinking water** **70%**

The issue most respondents said was 'very important'.



 **4 out of 5 respondents said 'definitely' to investing more in our water networks...**

Water networks for wastewater and stormwater, as well as drinking water, need to be upgraded.
Anonymous, Canterbury

Storm water drainage is inadequate in our region.
Bruno, Tasman

About 150 comments mention the need to invest more in water networks.



By 2050, you told us that to have safe and reliable drinking water... We manage our water sustainably.



1,950 comments made on this scenario and related issues 

Clean water begins at the source so our waterways need protecting from all manner of pollution.
Dorz, Waikato

The drinking water quality issue in NZ has multiple ultimate causes related to both source water and infrastructure problems.
Mike, Canterbury

More private water storage systems to encourage homeowners to store water...
Anonymous, Auckland

Technology for grey water use in residential homes. E.g. Water from showers, baths and sinks.
Anonymous, Hawke's Bay

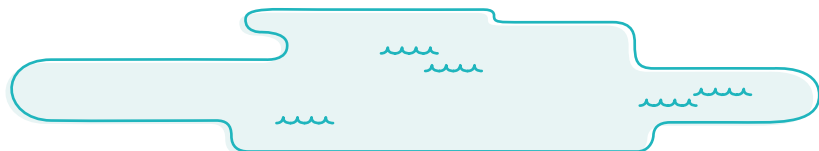
About 100 comments mentioned pollution of waterways as a concern.

About 200 of comments mentioned different ways to store and manage water.

 **3 out of 4 respondents said 'definitely' to using technology to save water.**

We need meters on the network, to effectively measure usage and waste.
Anonymous, Wellington

For saving water, I object to charging for it but gamifying it could be a better option. Get towns and cities competing to use less water.
Anonymous, Taranaki




By 2050, you told us that to prepare for the impacts of climate change... We produce less waste.

We adopt low carbon technologies.



2,015 comments made on this scenario and related issues 

 **2 out of 3 respondents rated 'Our lack of recycling means we create too much waste' as 'very important'.**

 **85% of respondents said 'definitely' to producing less waste.**


Recycling is like mopping the floor when the bath overflows – we need to turn off the tap! Ban unnecessary plastic packaging.
Judith, Auckland

Waste management and recycling is very poor in NZ. We need to be able to recycle our own rubbish.
Anonymous, Southland

1 in 8 comments mentioned recycling and/or reducing waste and rubbish.

Work on waste free solutions.
Dorz, Waikato

Put pressure on business rather than consumers to reduce waste and eliminate plastic.
Saskia, Wellington

 **2 out of 3 respondents said 'definitely' to 'increase the use of technology'.**

Reduce water pollution through education, incentives and use of technology.
Anonymous, Canterbury

Building enviro-friendly apartments and more quality and affordable accommodation in cities is a good idea.
Marianne, Northland

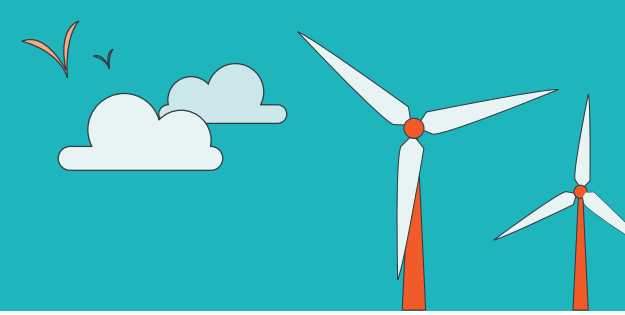
1 in 12 comments mentioned adopting new technologies to be more environmentally friendly.

All new houses should be solar powered.
Anonymous, Auckland

We are not utilising smart technologies to improve NZ services and our overall productivity.
Anonymous, Wellington

By 2050, you told us that to prepare for the impacts of climate change...

We make critical infrastructure more resilient to climate change.



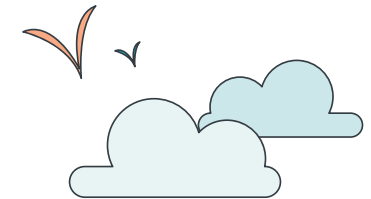
2,015 comments made on this scenario and related issues 



We are not building climate resilience in our infrastructure.
Anonymous, Auckland

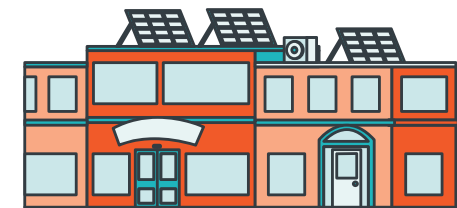
Yes move people re climate change to lower impact areas.
Anonymous, Canterbury

Doing everything we can to mitigate climate change.
Nardia, Bay of Plenty



1 in 10 comments mentioned responding to climate change.

We need to increase our resilience to upcoming climate change by retaining our natural resources, and encouraging local, small scale, sustainable economies and technologies. This would also help reduce our impact on the earth.
Anonymous, Tasman



To help build a better Aotearoa, we need to... Get infrastructure delivered faster.



Fund infrastructure in different ways.

The current infrastructure projects take too long to finish and won't have a long term impact.

Anonymous, Auckland

This is the year to get these decisions made. We move remarkably slowly as a small country of 5 million.

Anonymous, Canterbury

400+ comments mentioned speeding up the infrastructure delivery process.

Growth itself (population, economy, etc) – isn't sustainable.

Anonymous, Bay of Plenty

We need more housing and other key infrastructure to keep up with the population we have before bringing new people in to boost a false economic growth figure.

Anonymous, Auckland

350+ comments mentioned coping with population growth.



3 out of 5 respondents rated 'our cities can't keep up with growth' as 'very important'.



3 out of 5 respondents rated 'it takes too long to build transport options' as 'very important'.

Some areas are funded better than others in terms of education and other infrastructure based on current population... Shouldn't it be based on predicted population??

Anonymous, Waikato

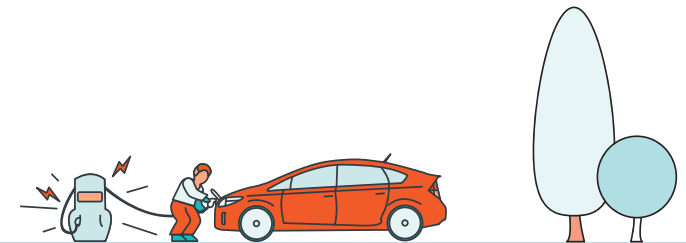
It costs far too much money to build infrastructure in NZ compared with other countries.

David, Auckland

250+ comments mentioned the cost/funding of infrastructure and ways to pay for it.



44% of respondents rated 'Our smaller towns struggle to pay for infrastructure' as 'very important'.



To help build a better Aotearoa, we need to...

Prioritise the environment in our decision making.



Coordinate our infrastructure effort more effectively.



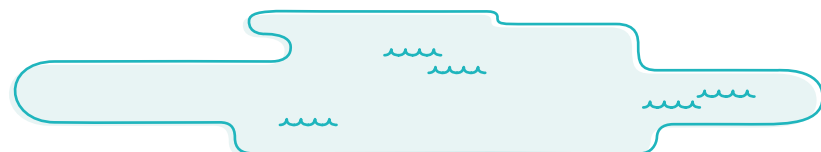
Tackling climate change should be a high priority.
Anonymous, Northland

Without prioritising a climate change actions the issues around jobs and people will be much worse.
Anonymous, Waikato

850+ comments mentioned prioritising or protecting our environment.



Planet was the top priority in all 3 scenarios.



How quickly is much less of an issue than having reliability and certainty – be that project delivery or undertaking a journey.
Anonymous, Wellington

Many councils, particularly small councils are chronically under resourced, lack skilled and qualified staff at all levels from operator to technical to management.
Anonymous, Hawkes Bay

Around 250 comments mentioned the need to coordinate the ownership/delivery of infrastructure.

Stop urban sprawl. Our cities need to go up not out.
Sandra, Otago

Our housing and urban planning is no longer suitable to meet human and climate needs.
Emile, Wellington

Around 250 comments mentioned the need for better urban and spatial design and planning.